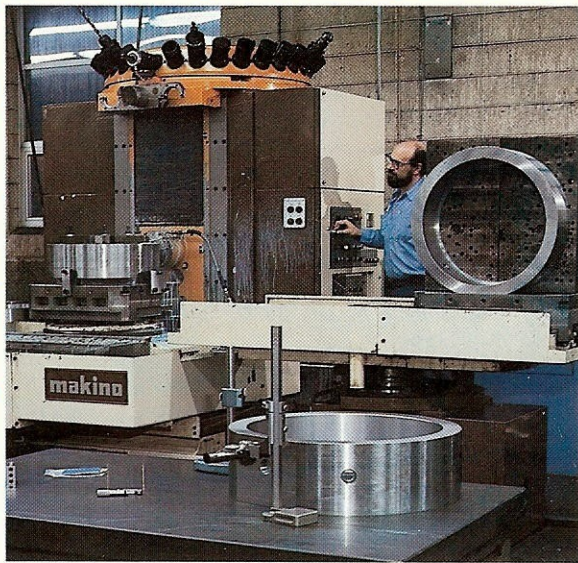


FAIRLANE TOOL





NC lathes used to produce medium-size precision torque converter parts.

Serving a variety of industrial needs

Fairlane has provided a wide variety of machined parts for many diversified industries:

- aerospace
- agricultural
- aircraft
- diesel engine
- tactical military vehicles
- off-road equipment
- oil field
- ordnance
- special machine tool
- transmission



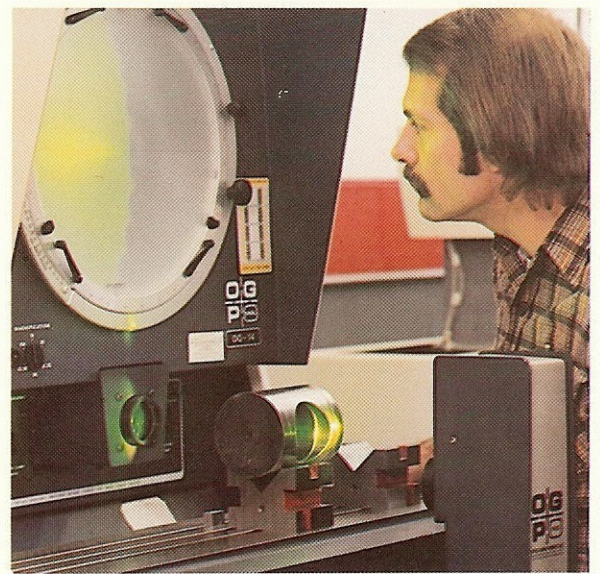
Fairlane's Quality Control department checking keyways on a large pump shaft.



Fairlane assures quality by checking products with computerized coordinate measuring machines.



Torque converter parts are checked by spin balancing.

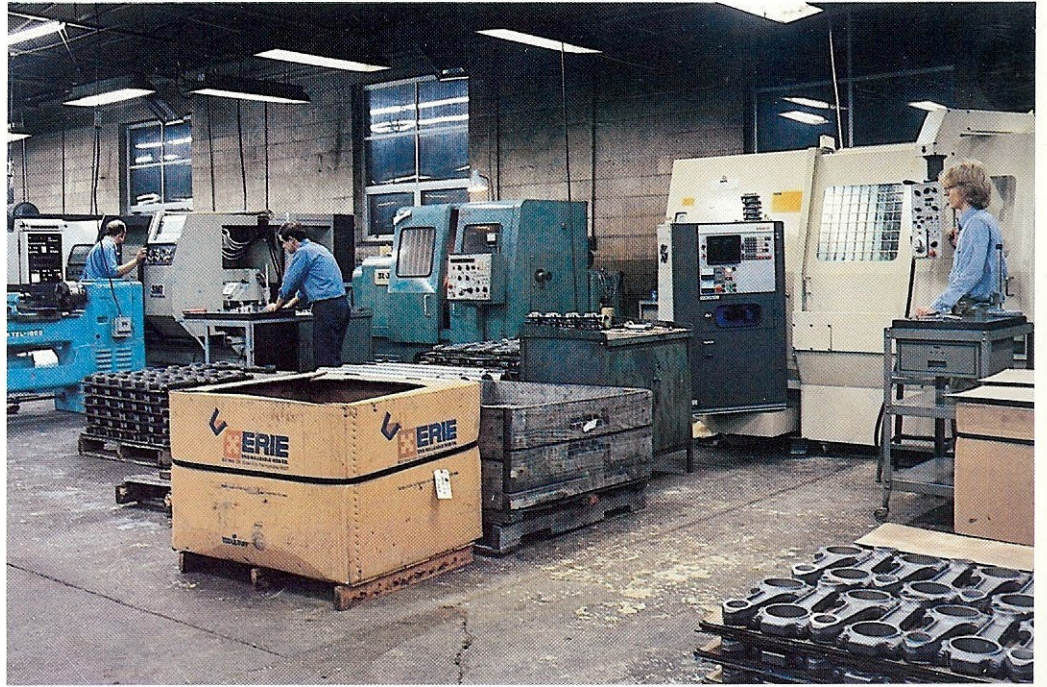


Optical comparator checking splines on a torsion bar anchor.

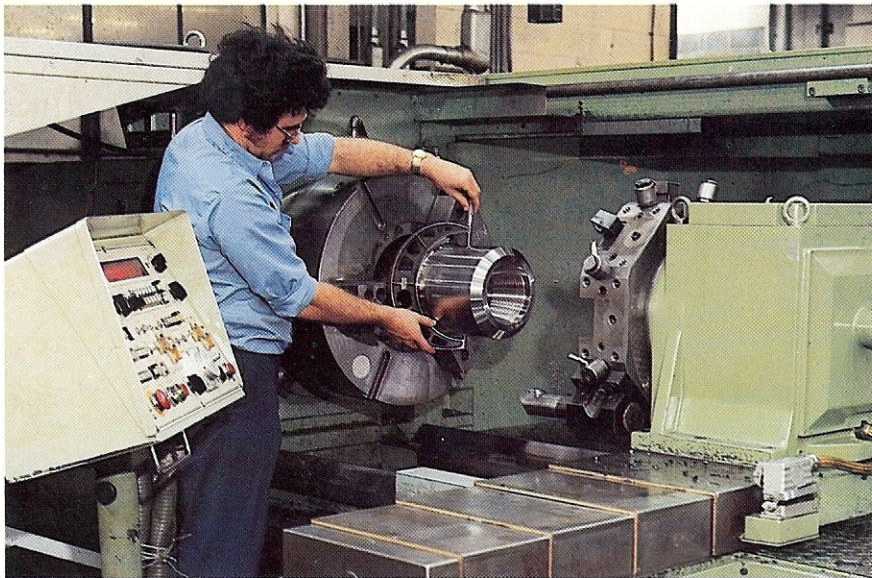
Fairlane Tool Co., Inc. supplier of quality

For almost thirty years, customers across the United States have relied on Fairlane Tool Co., Inc., for high quality, dependable machined parts built to the most rigorous specifications.

That's why the U. S. Army, Rockwell International, General Motors, Massey Ferguson and others have turned to Fairlane for their precision machining requirements.



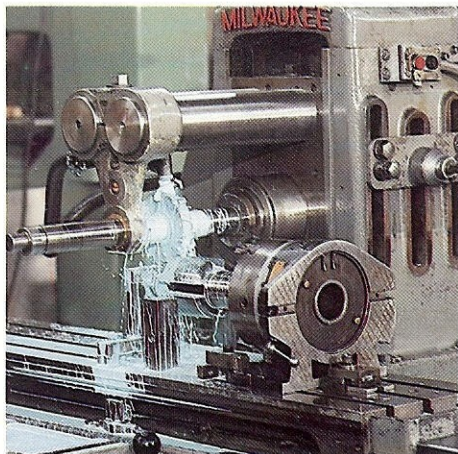
Numerical control (NC) lathes, used to produce small-to medium-size aircraft parts.



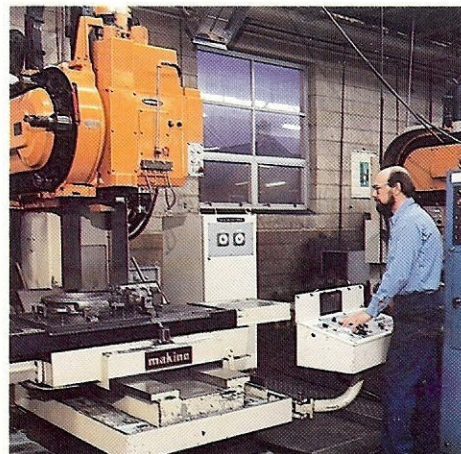
Our 36" NC lathe shown threading parts for the oil field industry.

Investing in the future

Here at Fairlane Tool, we've grown with the market. When our customers brought us more sophisticated parts to be made, we met the need head-on by investing in state-of-the-art machining tools and the latest in quality control equipment. Our goal is to build quality and maintain a zero-rejection ratio with each of our customers.



Fairlane also has a well-equipped production milling and drilling department.



3-axis machining center shown producing a large connecting rod.



Precision indexed keyways in a large pump shaft are possible by using our 4-axis machining center.

A name for quality and dependability

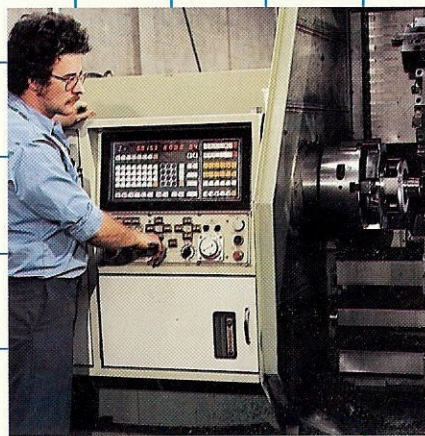
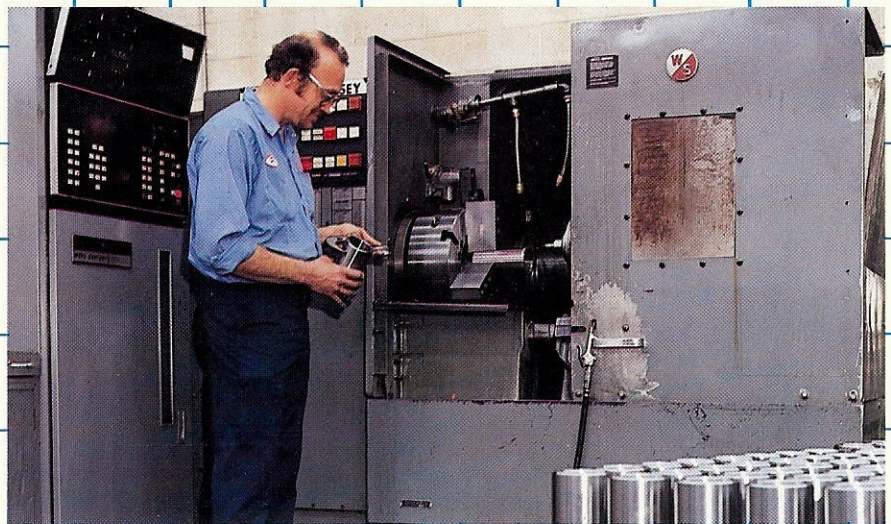
Whether your order is for prototypes, medium or long runs, Fairlane is **the** precision machine company, currently certified by:

- U.S. Army Tank Automotive Command
- Detroit Diesel Allison
- Caterpillar Tractor
- Ford Motor Company
- General Dynamics
- GM Parts Division
- Massey Ferguson
- Rockwell International

Some of the largest, most prestigious manufacturers in the country have come to rely on Fairlane Tool ... maybe you should, too.

Give us a call at
(313) 293-0711

Fairlane Tool Co., Inc.
31790 Groesbeck Highway
Fraser, Michigan 48026



Produced by: M & A Graphics / Roseville, Michigan

FAIRLANE TOOL

... when you require the finest in precision machined parts